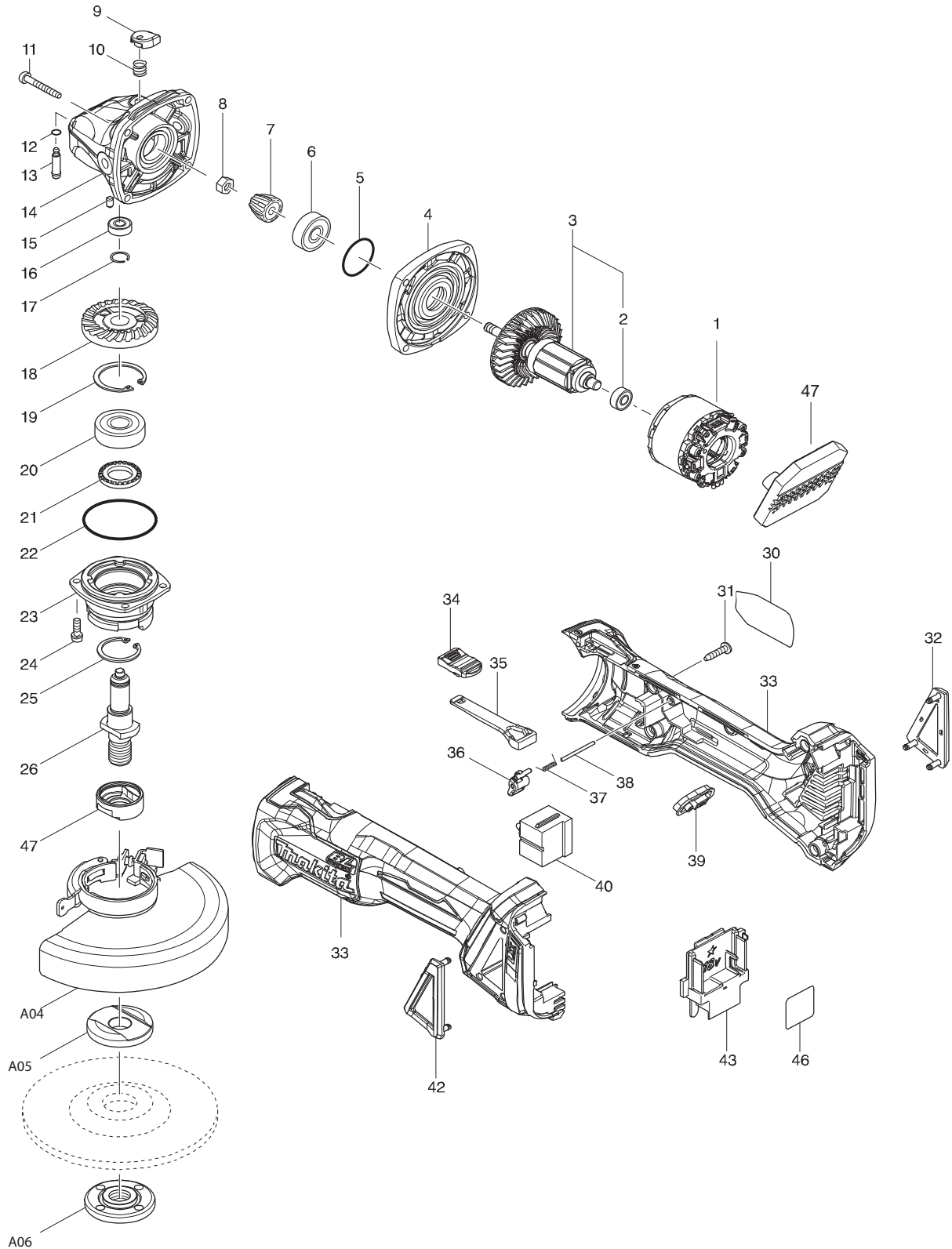




02 - 2016

DGA506

18V BL 5" Angle Grinder w/Electric Brake (Two-Stage Safety Paddle Switch)



PARTS LIST

Item No	Type	Part No	Description	Qty	Unit
001	1	629201-7	* STATOR COMPLETE	1	PC.
001	2	629B61-9	* STATOR	1	PC.
002	2	210169-4	BALL BEARING 607LLB	1	PC.
003	2	510329-1	ROTOR ASS'Y	1	PC.
003	2	INC.	Item No. 2		
004		319214-3	GEAR HOUSING COVER	1	PC.
005		213445-5	O-RING 26	1	PC.
006		210042-8	BALL BEARING 629LLB	1	PC.
007	1	227541-3	SPIRAL BEVEL GEAR 10	1	PC.
007	2	226861-2	SPIRAL BEVEL GEAR 10	1	PC.
008		252186-8	HEX. NUT M6	1	PC.
009		417771-6	PIN CAP	1	PC.
010		233072-2	COMPRESSION SPRING 8	1	PC.
011		266361-0	TAPPING SCREW 4X30	4	PC.
012		213960-9	O RING 5	1	PC.
013		256546-6	SHOULDER PIN 4	1	PC.
014		319213-5	GEAR HOUSING	1	PC.
015		263002-9	RUBBER PIN 4	1	PC.
016		210033-9	BALL BEARING 696ZZ	1	PC.
017		233950-6	RING SPRING 11	1	PC.
018	1	227641-9	SPIRAL BEVEL GEAR 37	1	PC.
018	2	226862-0	SPIRAL BEVEL GEAR 37	1	PC.
019		962151-6	RETAINING RING R-32	1	PC.
020		211129-9	BALL BEARING 6201DDW	1	PC.
021		262153-5	FELT RING 16	1	PC.
022		213622-9	O RING 45	1	PC.
023		319399-5	BEARING BOX	1	PC.
024		911121-2	PAN HEAD SCREW M4X14	4	PC.
025		962105-3	RETAINING RING R-26	1	PC.
026		326670-0	SPINDLE A	1	PC.
030		851Y86-5	NAME PLATE F/DGA506	1	PC.
031		266326-2	TAPPING SCREW 4X18	5	PC.
032		455450-8	DUST COVER R	1	PC.
033	2	183J39-9	MOTOR HOUSING SET	1	SET
033	2	INC. 263005-3	RUBBER PIN 6	2	PC.
034		455447-7	SWITCH KNOB	1	PC.
035		455446-9	SWITCH LEVER	1	PC.
036		455448-5	LEVER	1	PC.

Item No	Type	Part No	Description	Qty	Unit
037		231679-8	TORSION SPRING 2	1	PC.
038		268330-7	PIN 2	1	PC.
039		142901-7	INDICATOR PANEL COMPLETE	1	PC.
040		650579-7	SWITCH 1246.3223	1	PC.
042		455449-3	DUST COVER L	1	PC.
043		643899-6	TERMINAL	1	PC.
046		851Y94-6	SERIAL NO. LABEL F/DGA506	1	PC.
047		310515-2	LEAD FLANGE A	1	PC.
048		652119-7	* PH SCREW M2X6	6	PC.
048		620K14-5	* CONTROLLER	1	PC.
A01		D-20797	5" D.C.W. A24R	1	PC.
A01	Opt.	-----	DEPRESSED CENTER GRINDING WHEELS		
A02		158237-4	GRIP 36 COMPLETE (RUBBER GRIP)	1	PC.
A02	Opt.	194514-0	VIBRATION PROOF GRIP F/4" - 6", PKG	1	PC.
A03		782424-9	LOCK NUT WRENCH 28	1	PC.
A04		123145-8	5" TOOLLESS WHEEL COVER ASSY (D.C.W)	1	PC.
A04	INC.	265180-1	PAN HEAD SCREW M5X16	1	PC.
A05		224448-4	INNER FLANGE 45B	1	PC.
A06		224568-4	LOCK NUT 5/8-45	1	PC.
A07		196845-3	TUCKPOINTING DUST GUARD ATTACHMENT F/5"	1	PC.
A08		193048-0	SANDING LOCK NUT 5/8-48,PKGED	1	PC.
A09		743015-1	RUBBER PAD F/5" GRINDER	1	PC.
A10		122911-0	CUT-OFF WHEEL GUARD F/5"	1	PC.
A11		224399-1	INNER FLANGE F/C.O.W WHEEL COVER	1	PC.
A12		224568-4	LOCK NUT F/C.O.W WHEEL COVER	1	PC.
A13		-----	18V LI-ION BATTERY		
A14		-----	BATTERY CHARGER		
A15		-----	LI-ION BATTERY ACCESSORIES		
A26		B-46165-25	5" THIN KERF C.O.W 25PC/SET	1	SET
A27		A-98251-25	5"x5/32"x7/8" FGW T27 WA36P 25/SE	1	SET
E01		805C41-7	CAUTION LABEL	1	PC.

SERVICE CHANGES: DGA506

1. Changes on Spiral bevel gear. (T/#C3594)

Item No.	Description	Type 1	Type 2
7	SPIRAL BEVEL GEAR 10	227541-3	226861-2
18	SPIRAL BEVEL GEAR 37	227641-9	226862-0

Above parts are completely interchangeable as a set.

2. Changes on Stator, Controller and PH Screw M2x6 (T/#DE703)

Item No.	Description	Type 1	Type 2
1	STATOR	629201-7	629B61-9
48	CONTROLLER	-----	620K14-5
49	PH SCREW M2X6	-----	652119-7

Above parts are completely interchangeable as a set.

See T/#DE703 for repair and wiring